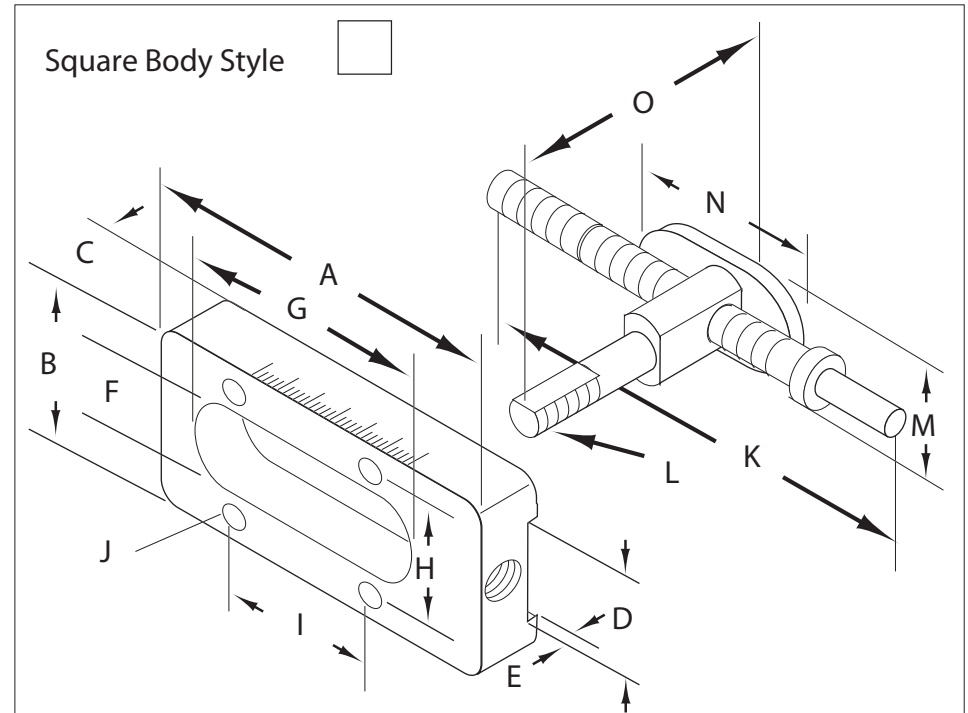
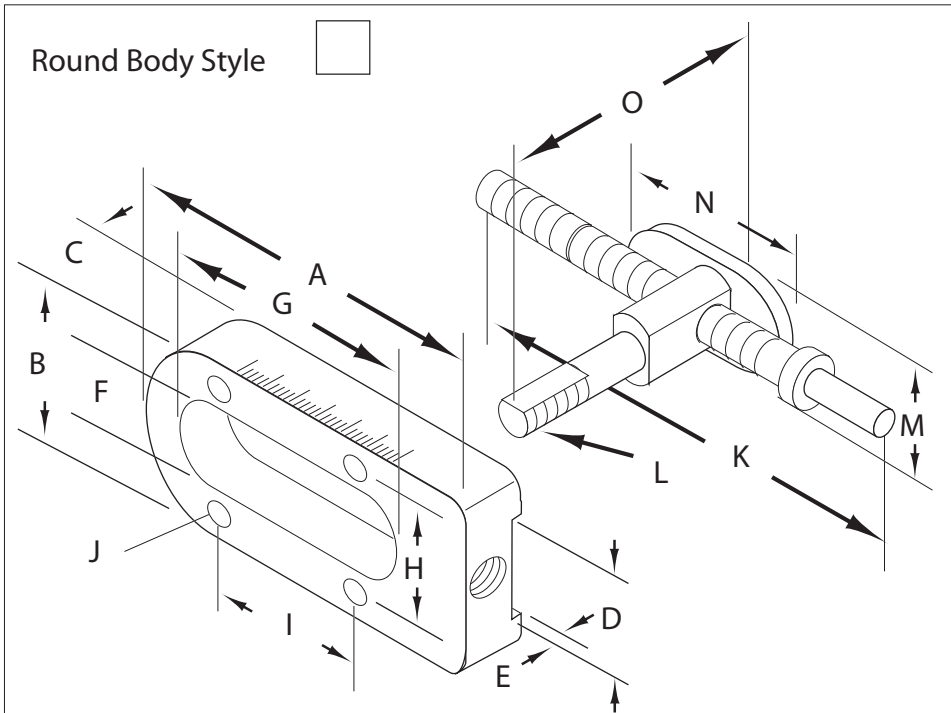
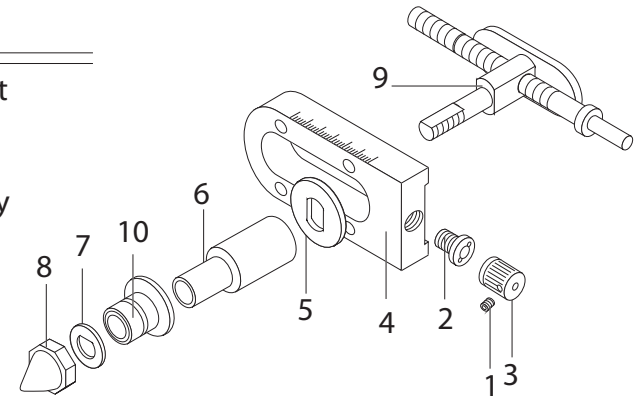


Volume Control Assembly  
Part Number Identification Form

Instructions:

Please check the box for the body style of your volume control. Then fill in all dimensions for the volume control body and lead screw stud so your particular volume control can be identified. Circle the item number of the parts needed for your volume control. Filling Machine Serial Number, \_\_\_\_\_, Model Number \_\_\_\_\_  
Mail or fax form to place your order for parts.

Item No.	Part Name
1	Set Screw Cone Point
2	Lead Screw Bushing
3	Adjustment Knob
4	Volume Control Body
5	Indicator Washer
6	Bearing Sleeve
7	Post Nut Washer
8	Acorn Nut
9	Lead Screw Assy.
10	Bearing Sleeve Housing Assy.



A = Body Length \_\_\_\_\_ B = Body Width \_\_\_\_\_ C = Body Thickness \_\_\_\_\_ D = Rear Slot Width \_\_\_\_\_ E = Rear Slot Depth \_\_\_\_\_  
 F = Body Opening Width \_\_\_\_\_ G = Body Opening Length \_\_\_\_\_ H = Lateral Mount Hole Center Distance \_\_\_\_\_ I = Axial Center Distance \_\_\_\_\_  
 J = Number of Mount Holes: 2 or 4 or 6 \_\_\_\_\_ K = Adjustment Screw Length \_\_\_\_\_ L = Stud Diameter \_\_\_\_\_ M = Stud Base Width \_\_\_\_\_  
 N = Stud Base Length \_\_\_\_\_ O = Stud Length \_\_\_\_\_ Comments \_\_\_\_\_