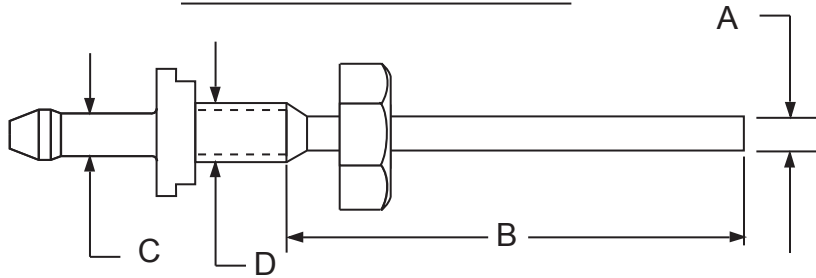
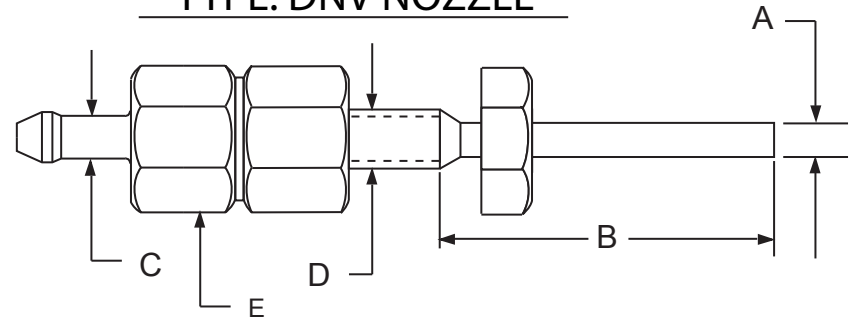


DELIVERY NOZZLE IDENTIFICATION

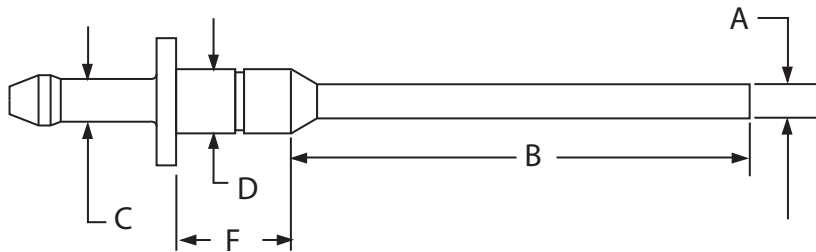
TYPE: DN NOZZLE



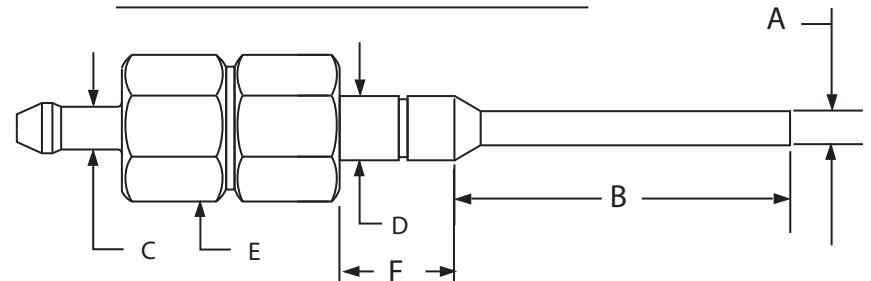
TYPE: DNV NOZZLE



TYPE: DN-C NOZZLE



TYPE: DNV-C NOZZLE



Please complete this form and fax to **(410) 764-0224** or email customerservice@filamatic.com

TYPE OF NOZZLE (IDENTIFY FROM ABOVE SCHEMATIC) _____

A) OUTSIDE DIAMETER OF NOZZLE TUBE IN INCHES _____

(STANDARDS: 1/16", 3/32, 1/8", 5/32, 3/16", 1/4", 5/16", 3/8", 7/16", 1/2", 9/16", 5/8", 3/4" & 7/8" - NOT ALL DIAMETERS AVAILABLE IN ALL NOZZLE STYLES AND SIZES)

B) LENGTH OF NOZZLE TUBE _____

C) INSIDE DIAMETER OF HOSE TO BE INSTALLED ON NOZZLE _____

(STANDARDS: 1/16", 1/8", 3/16", 1/4", 3/8", 1/2" & 3/4" - NOT ALL DIAMETERS AVAILABLE IN ALL NOZZLE STYLES AND SIZES)

D) DIAMETER OF SHANK OR THREAD ON NOZZLE (Std. Shank on DN-C & DNV-C is .654 DIA.) _____

E) DISTANCE ACROSS FLATS (WRENCH SIZE) OF DNV/DNV-C TYPE NOZZLES ONLY (Std. Sizes: 9/16, 7/8, 1-1/8, 1-1/2) _____

F) LENGTH OF SHANK (Filling Machinee - 1-1/4", Monobloc = 9/16") _____

INSIDE DIAMETER OF CONTAINER OPENING _____
 SCREENED OR UNSCREENED _____