

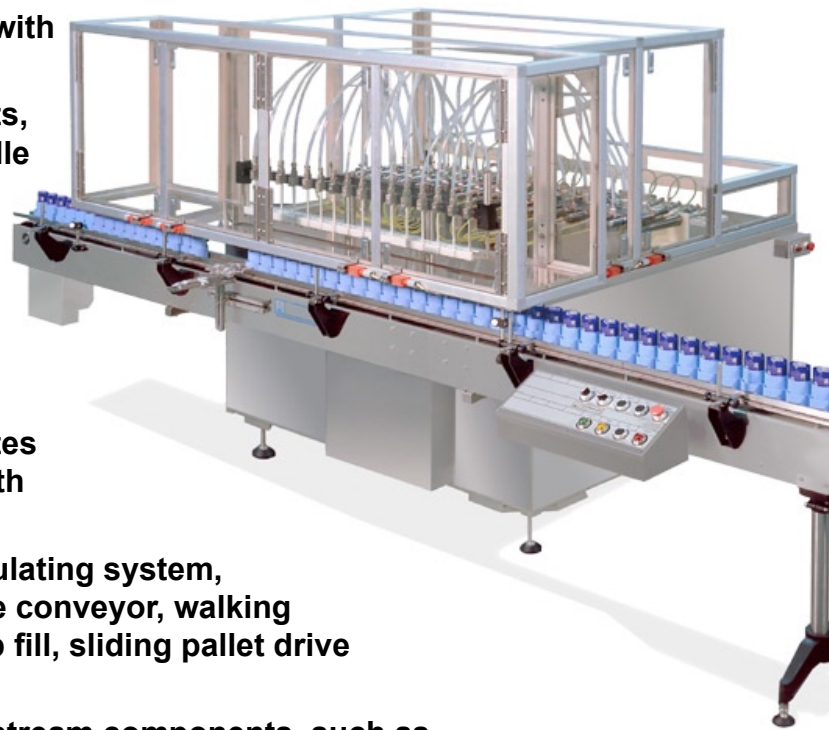


AUTOMATIC VOLUMETRIC LIQUID FILLING MACHINE



Series H Molten Products Filling Machine

- Fills liquids or liquified solids at temperatures from ambient to 200°F
- Speeds to 300 containers per minute
- Fill ranges from 1cc to 1100cc per stroke, with better than 1% accuracy
- Fill molten liquids such as stick deodorants, anti-perspirants, lipstick, lip pomade, candle wax, and similar products with ease and precision
- Entire filling system, including the Filling Units, manifold, intake and discharge hoses, and nozzles, is housed in an enclosed, heated chamber
- Filling Units can be disassembled in minutes for cleaning, or can be cleaned in place with an optional flush-back system
- Available options include a product recirculating system, reciprocating nozzle bracket with dual lane conveyor, walking beam traveling fill head system, bottom-up fill, sliding pallet drive frame system, and valve-in-tip nozzles
- Integrates easily with upstream and downstream components, such as conveyors, unscramblers, cappers, labelers, and accumulators



Ask about optional enhancements

See reverse page for additional details

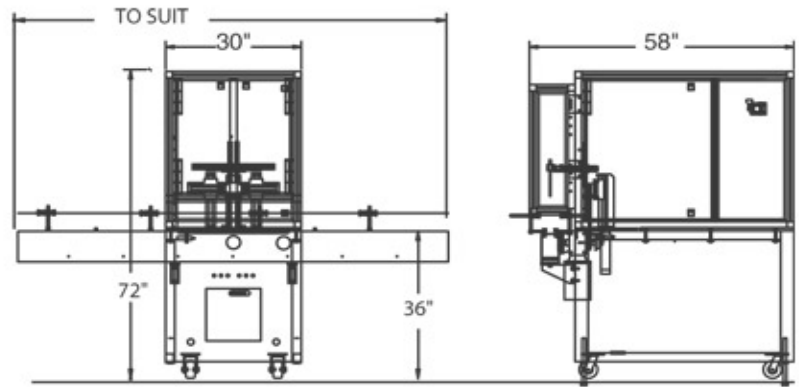
NATIONAL INSTRUMENT COMPANY, INC.
4119 Fordleigh Road • Baltimore, Maryland 21215, USA
800.526.1301 • 410.764.0900 • www.filamatic.com

H-CE “Controlled Environment” Fillers

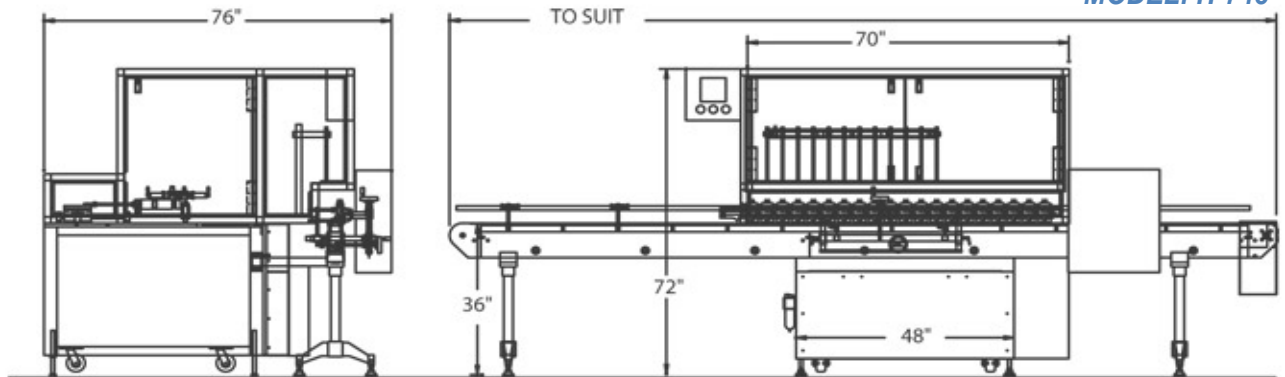
MODEL: H-730

DESCRIPTION

FILAMATIC® Series H-CE “Controlled Environment” Fillers provide a simple, trouble-free method of filling liquids or liquified solids at temperatures up to 200° Fahrenheit. Fill molten liquids such as stick deodorants, anti-perspirants, lipstick, candle wax, petrolatum base products, and similar materials with ease and precision. In fact, more stick deodorants and anti-perspirants are filled on Filamatic fillers than on any other make! Fill volumetrically from 1CC to 1100cc per stroke with better than $\pm 1\%$ accuracy - no need to overfill to meet label requirements.



MODEL: H-748



REMOTE VOLUME ADJUSTMENT

As an option, the Model H-CE molten products filler can be supplied with a servo drive remote volume adjustment, which enables the operator to regulate the fill volume from a push-button control panel positioned outside the controlled environment chamber. This eliminates the heat loss that occurs when the chamber is opened for volume changes. The servo drive mechanism used in conjunction with the push-button controls is available in either standard or hazardous atmosphere* configurations.*

WALKING BEAM NOZZLE SYSTEM (OPTIONAL)

FILAMATIC® molten products fillers are available with a Walking Beam nozzle inserter system. This system controls the filling nozzles position during filling, while the containers are in motion in a continuous motion servo controlled timing screw. A double axis, servo controlled bottom-up system positions fill heads and follows the containers in the servo controlled timing screw as the product is dispensed from the servo driven fill system. This 4 axis servomotor system is programmed to combine controlled product flow rate with fill nozzle tip positioning and continuous container motion during filling to create a state of the art fill cycle profile. This programmed fill cycle profile is refined down to the millisecond for maximum production rates. When filling different products a menu driven graphic interface control screen makes entering a new fill cycle profile as easy as pressing a button.



Specialists in Liquid Filling Systems

National Instrument Company, Inc.
4119 Fordleigh Road • Baltimore, Maryland 21215, USA
800.526.1301 • 410.764.0900 • Fax: 410-764-7719
www.filamatic.com info@filamatic.com

©2004 National Instrument Company, Inc.

* Those electrical components of this machine that are normally exposed to hazardous atmospheres are NEMA (National Electrical Manufacturer's Association) rated for use in a Class 1 Division 1 Group D atmosphere. However, the entire machine, as assembled, is not certified or warranted to operate in a Class 1 Division 1 Group D atmosphere by National Instrument Company, Inc. If desired, National Instrument Company, Inc. will seek, at Customer's expense, third party certification that the entire machine, as assembled, is rated for use in a Class 1, Division 1 Group D atmosphere.